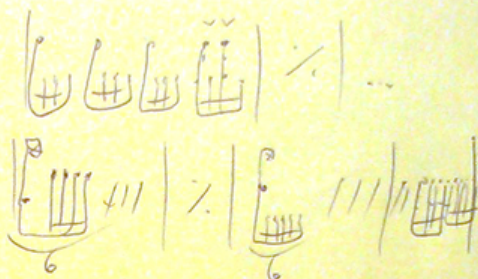


TEST THE STEEL (POWERMAD)

RIFF A $\begin{array}{c} 4 \\ 4 \end{array} | 4 | 4 |$

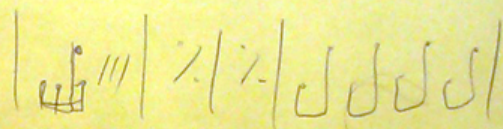


TRANS $\begin{array}{c} 4 \\ 4 \end{array} | 4 | 4 |$
 $\begin{array}{c} 12 \\ 8 \end{array} | 2 | 2 |$



BASS/DR $\begin{array}{c} 4 \\ 4 \end{array} | 4 | \text{⊕}$

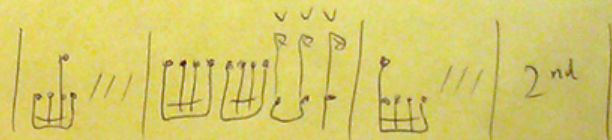
VERSE 1 $\begin{array}{c} 4 \\ 4 \end{array} | \overset{\text{(instr)}}{4} | 4 | 4 |$



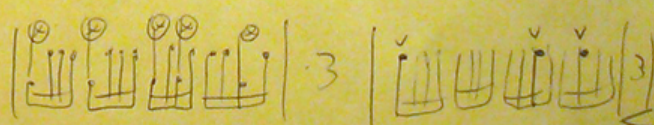
FAST GUIT $\begin{array}{c} 4 \\ 4 \end{array} | 3 | 4 | 4 |$

VERSE 2 $\begin{array}{c} 4 \\ 4 \end{array} | \overset{\text{(instr)}}{4} | 4 | 4 |$

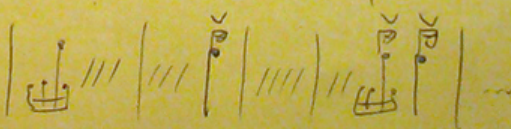
CHORUS $\begin{array}{c} 4 \\ 4 \end{array} | 2 | 2 |$



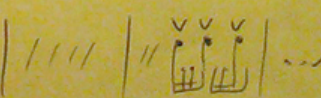
VERSE TRANS $\begin{array}{c} 4 \\ 4 \end{array} | 4 | 4 |$



SOLO $\begin{array}{c} 4 \\ 4 \end{array} | 4 | 4 |$

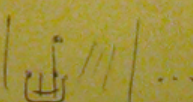


$\begin{array}{c} 4 \\ 4 \end{array} | 4 | 4 | \text{\$}$



VERSE 4 BASS/DR $\begin{array}{c} 4 \\ 4 \end{array} | 4 | 4 |$

CHORUS $\begin{array}{c} 4 \\ 4 \end{array} | 2 | 2 |$



VERSE FAST $\begin{array}{c} 4 \\ 4 \end{array} | 4 | 4 | 4 | 4 | 3 | 3 |$

